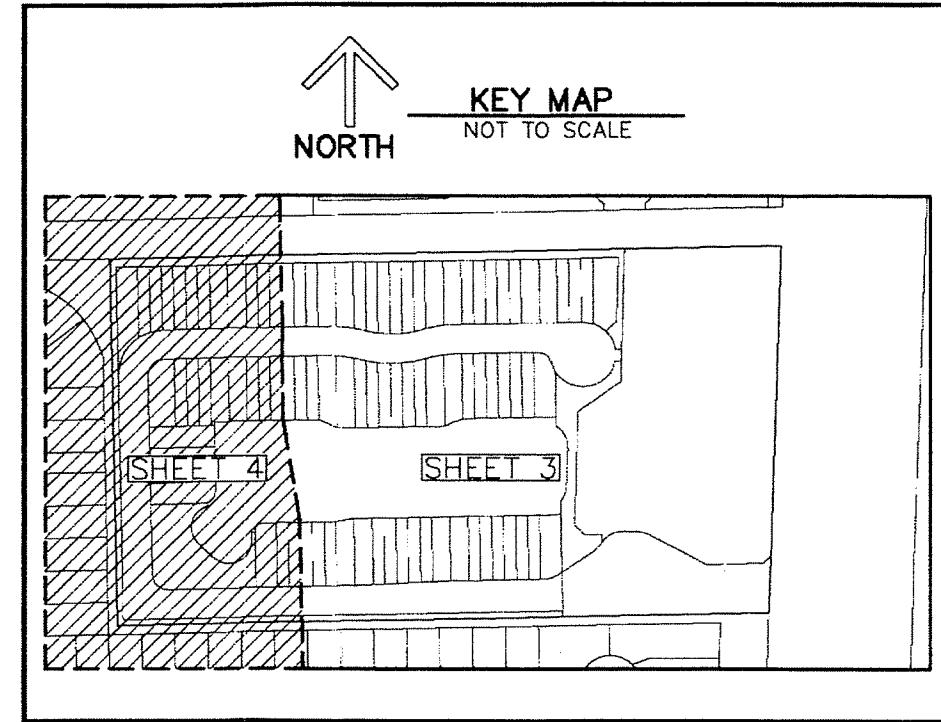


THIS INSTRUMENT PREPARED BY
 DAVID P. LINDLEY
 OF
CAULFIELD and WHEELER, INC.
 SURVEYORS - ENGINEERS - PLANNERS
 7900 GLADES ROAD, SUITE 100
 BOCA RATON, FLORIDA 33434 - (561)392-1991
 CERTIFICATE OF AUTHORIZATION NO. LB3591
 JUNE - 2013

WELLINGTON PARC

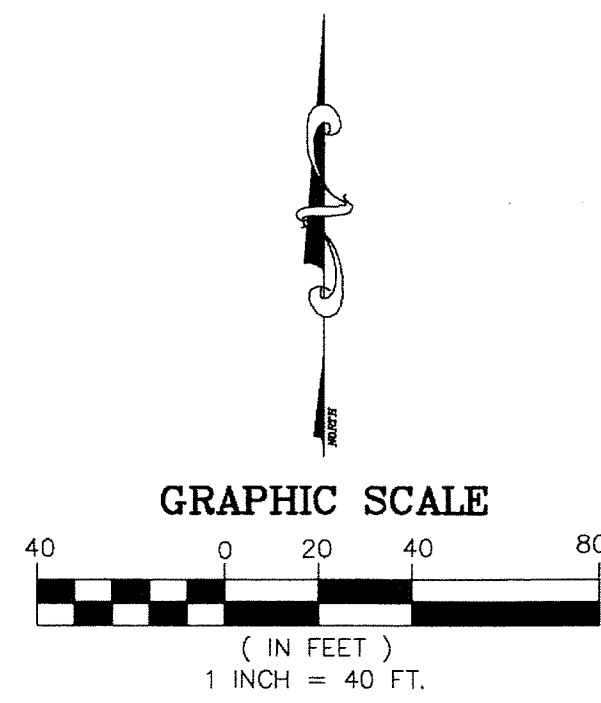
BEING A REPLAT OF A PORTION OF TRACTS 17 AND 18 OF BLOCK 26, PALM BEACH FARMS PLAT NO. 3,
 AS RECORDED IN PLAT BOOK 2, PAGES 45 THROUGH 54 OF THE PUBLIC RECORDS OF PALM BEACH COUNTY, FLORIDA
 LYING IN SECTION 24, TOWNSHIP 44 SOUTH, RANGE 41 EAST, VILLAGE OF WELLINGTON, PALM BEACH COUNTY, FLORIDA



STATE OF FLORIDA
 COUNTY OF PALM BEACH
 THIS PLAT WAS FILED FOR
 RECORD AT _____ M.
 THIS _____ DAY OF _____
 A.D. 20____ AND DULY RECORDED
 IN PLAT BOOK _____ ON
 PAGES _____ AND _____
 SHARON R. BOCK
 CLERK AND COMPTROLLER

BY: _____
 DEPUTY CLERK

SHEET 4 OF 4



- LEGEND/ABBREVIATIONS**
- PRM - INDICATES PERMANENT REFERENCE MONUMENT
 4"x4"x24" CONCRETE MONUMENT WITH DISK
 STAMPED PRM LB#3591
 - - INDICATES PERMANENT CONTROL POINT
 - CL - CENTERLINE
 - ∠ - CENTRAL ANGLE
 - R - RADIUS
 - L - ARC LENGTH
 - CB - CHORD BEARING
 - CD - CHORD DISTANCE
 - DE - DRAINAGE EASEMENT
 - LAE - LIMITED ACCESS EASEMENT
 - LB - LICENSED BUSINESS
 - LBE - LANDSCAPE BUFFER EASEMENT
 - LMAE - LAKE MAINTENANCE EASEMENT
 - LME - LAKE MAINTENANCE EASEMENT
 - NO. - NUMBER
 - N.T.S. - NOT TO SCALE
 - O.R.B. - OFFICIAL RECORDS BOOK
 - (R) - RADIAL LINE
 - RMWE - RAW WATERMAIN EASEMENT
 - SF - SQUARE FEET
 - UE - UTILITY EASEMENT
 - WFOAUE - WELLINGTON PARC OWNERS
 ASSOCIATION UTILITY EASEMENT

